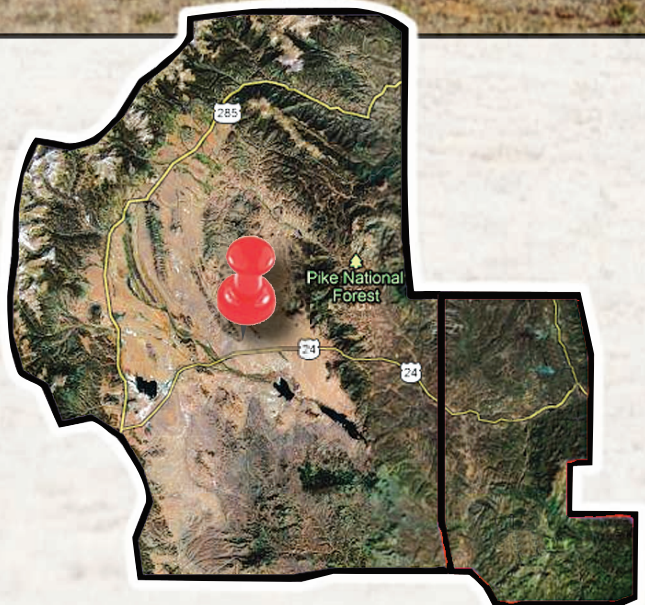


Welcome to Ute Country

Keep close to Nature’s heart... and break clear away,
once in awhile, and climb a mountain or spend a
week in the woods. Wash your spirit clean.
— John Muir



INSIDE	
Hike the Hayden Divide Loop Trail	2
SPCFPD Hummer.....	2
Kids enjoy fishing derby	3
The John Wesley Ranch	4
Quilters Above the Clouds.....	5
Update on the new Florissant Fossil Beds Visitor Center.....	6
Meat processing comes to Lake George.....	7
Critter Corner.....	7
Mountain Arts Fest	7
Guffey Community Charter School Graduation – 2012.....	8
Woodland Park location for sprint during USA Pro.....	9
UPHS History Park Tours	9
Nighthawk Ranch.....	10
Coalition of Pikes Peak Historic Museums	11
The 2nd Annual SWAT Tactical Demonstration & Public Training Event.....	11
Meet Joe Kraudelt:	
The Black Bear’s best friend in Colorado	12
You might live in Colorado if:.....	13
Bronc Day Festival is Aug. 4th	13
Tractors, gems and food	13
Financial Tips for Newly Single Women.....	14
County bits	14
Out and About.....	14
Lake George Charter School dedication	15
Meet Sunshine Spider!.....	15



Howdy!

We must first express our gratitude to ALL the firefighters, forest workers, law enforcement, emergency personnel, and volunteers during this fire season. The Springer Fire and Waldo Canyon fires truly kept us mountain folk alert. Even road rage seemed to be on the decline while employees made the long trip to Canon City or down Gold Camp Road. Out of the tragedy came great compassion as neighbors helped each other. Volunteers formed neighborhood watches. Communities worked together for fire mitigation in our neighborhoods. True to the home-steader tradition, folks teamed up to protect the land they love so dearly.

Special thanks to Monica & Cori at the Divide Post Office; Monica found a way to serve the many evacuees searching for their mail while Cori helped us with the paperwork to get the July issue out on time. Tensions were quickly cut with excellent organizational skills, great staff, and pleasant smiles!

We have received incredibly positive feedback from our first issue since Publishers Emeritus Carman & Beverly Stiles so graciously handed us the "torch". The magnitude of this opportunity is still sinking in!

Mr. Spaz is looking for your favorite critter photos for Critter Corner. He can't wait to make September's pick so PLEASE send him some photos to ponder over. He likes to take his own sweet time in choosing his selection.

CORRECTION: The age of the Earth is 4 billion years and the age of the Universe is 13.7 billion. Thanks for the opportunity to publish the correction.

— Jeff & Kathy Hansen

UTE COUNTRY NEWS

The Ute Country News is not responsible for the content of articles or advertising in this issue. Please address any comments to the publishers at utecountrynewspaper@gmail.com.

Published by: High Pine Design
Publishers: Jeff & Kathy Hansen - 686-7393
Sales: Bill Sinclair - 598-0185
Reporters:
Lake George - Maurice Wells - 748-1017
Florissant - Bani Kurth - 748-1163
Divide - David Martinek - 687-1516
Guffey - Flip Boettcher - 429-3361
Outside events - Jeff Tacey - 748-0300
Nature & Science - Steven Veatch - 748-5010
4 Mile - Charlotte Bumgarner - 719-689-2461
Critter Corner Photo Editor: Mr. Spaz
Publishers Emeritis: Carmon & Beverly Stiles

A special thanks to all the above for their professional work and time to make this issue possible.

Hike the Hayden Divide Loop Trail

by David Martinek
photos by David Martinek

Gaze down into the valley. Walk the serpentine paths up over the ridge and watch the prairie dogs play. Squint into the morning sunlight as it peaks over Raspberry Mountain and Pikes Peak at the start of a new day. Imagine those earlier times when the Midland Terminal Railroad labored to and fro through this place, freighting gold ore down Ute Pass to enrich someone's fortune.

Sometimes, very simple places can become magical if we'll just let our minds wonder through the nature and the history.

Such a place is the Hayden Divide Loop Trail. The trailhead is easily reached from the Hayden Divide Community Park, southeast of the junction of U.S. Highway 24 and State

Highway 67. Just south of the Divide Post Office and the Peak Vista Community Health Center, it winds through upland grasslands and meadows along the Rule Creek drainage. Hikers can see historic berms left from turn-of-the century lettuce farming, stroll across the old railroad bed and enjoy a constantly changing carpet of wildflowers. Often, quiet users can spot coyote, fox and elk. Flocks of horned larks are common in winter.

A large sundial rests on the eastern boundary of the trail

near the banks of Colson Lake. Laid out in a star pattern with benches and rock tile, a person can sit in the warm sun and ponder the meaning of life or console their conscious.

From the look of the grasslands and open space, one can only imagine what the area looked like back when houses dotted the sides of the Midland Terminal tracks and sawmills turned area trees into railroad ties, mine timbers and dust.

Funded in part by Great



The trail winds through upland grasslands and meadows along the Rule Creek drainage. Hikers enjoy a constantly changing carpet of wildflowers. Raspberry Mountain and Pikes Peak frame the background.

Outdoors Colorado from monies generated by the Colorado Lottery, the trail (part of the American Discovery trail system) was named after the original town name, Hayden Divide, which honors the first person to conduct a geological survey of the area in the 1870s – Ferdinand Vandever Hayden.

It's an easy walk – only 2.7 miles long. The valley stretches out before you serenely and the granite pebbles lining the pathways crutch assuredly under your feet. There's not much to it, really, just meadow, sunlight and mountains. But if you open up your mind and heart and soak in the beauty that you feel and see, you'll discover that the magic of the place is in you.



The sundial is laid out in a star pattern with meditation benches.

SPCFPD Hummer

by Flip Boettcher
photo by Flip Boettcher

The Guffey-based Southern Park County Fire Protection District (SPCFPD) recently acquired a free military Humvee 4X4 utility vehicle through the efforts of Park County under sheriff Monte Gore. SPCFPD firefighters Lawrence Epps and Gordon Scott picked it up from Fort Carson in mid-June.

It is always in four wheel drive. Its short wheel base and low, wide profile are great for rugged terrain. The SPCFPD got the two-seater pick up model. The large bed in the back will allow for a unit with a 250-300 gallon water tank and a hose reel to be slid inside. Utility boxes will also be added on the side for storage.

"It's not quite new; it needs doors and a paint job, but it should be able to go just about anywhere" said fire Chief Don Felton. Indeed, it would climb Mt. Lincoln with the right driver. Felton said he expects the Humvee to be ready in a few months. It will be a type-6 engine for use in wildfires.

According to Gore, law enforcement offices can get equipment and vehicles through a state program. Sheriff Fred

Wegener told Gore to see about getting Humvees to equip Park County Fire Departments, especially with our wild-fire predicament this year. The Humvee can handle the terrain.

Gore has acquired 3 of these free Humvees; 1 for the Sheriff's Department SWAT Team, 1 for Northwest Fire Department and 1 for the SPCFPD. The vehicles stay in the Sheriff's Department inventory but are used by the Fire Department, said Gore. The list value for the SPCFPD vehicle was around \$40,000.

Gore was going to ask the other Park County fire districts if they were interested in a Humvee, so he might be getting more of them he said.



Gore has also gotten weight and exercise equipment for the Northwest Fire Department, as well as the Jefferson/Como Fire Department. The only stipulation is that the Sheriff's Department can also use the equipment. Gore stressed that it is important for firefighters and sheriff's officers to stay fit.

Gore said he expects a rough wildfire season this year but he said all the Fire and Emergency Departments seem to be working together quite well.

Organic Foods | Local Produce | Gluten-Free | Grass-Fed Beef | Pet Food

719-687-9851

790 Red Feather Lane • Woodland Park

Hours: 9:00am-6:30pm Mon-Fri • 10:00am-5:00pm Sat & Sun

Both Events on Sat, August 25

The 2nd Annual
Divide Wide Yard Sale
9:00 am - 3:00 pm
at Summit Elementary

Call Joe Kain at Ancestral Arts, 687-2278, for Space Availability.
Call Lisa Lee at 686-7587, to donate items.

The 14th Annual
Great Divide Kite Flight
9:00 am - 1:00 pm
Hayden Divide Community Park
FREE FAMILY FUN!

Free Kites Provided to Children under 12 who would like to come and fly a kite!
Healthy Snacks • Activities • Give-Aways

Sponsored by: Divide Chamber of Commerce, Teller County Public Health, Edward Jones Investments (Lee Taylor)

LIVING STREAMS CHURCH

Building relationships one heart at a time.

Sunday Service 10:30 a.m.
Christ Centered • Spirit Filled • Bible Based

www.livingstreamchurch.net
At Colorado Springs Christian School
1003 Tamarac Parkway, Woodland Park

719-598-0185
pastortrish@q.com

Kids enjoy fishing derby

by David Martinek
photos by David Martinek

Anytime you combine youngsters, water and fishing poles, they always seem to add up to lots of fun. In fact, “fun” is the main objective of the annual fishing derby sponsored by the Spring Valley Property Owners and Recreational Corporation (SVPORC) each year in early July for residents and their children living in Spring Valley.

This year, the derby was renamed the “2012 Terry Harris Memorial Children’s Fishing Derby” in honor of long-time resident and SVPORC board member, Terry Harris, who passed away recently. Terry was one of the founders of the fishing derby.

Always an exciting time for kids, parents and grandparents, this year’s derby was no exception. Held on Saturday, July 14, at the SVPORC’s “Pottie Pond,” a total of 81 children, ages three to sixteen, spent a morning catching 82 fish, two of which were special golden trout.

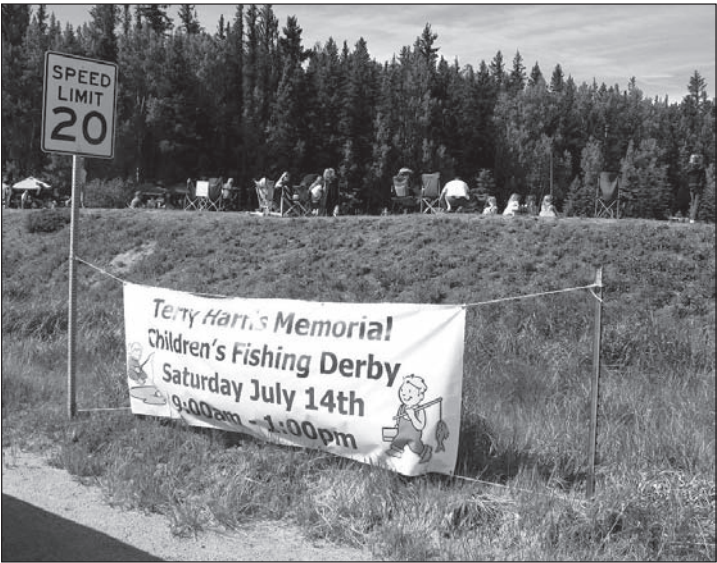
Prizes were awarded for the biggest and longest fish and raffle prizes were given out periodically. The grand raffle prizes included a blue camping table, an ice cream maker and tickets to the Cheyenne Mountain Zoo. The golden trout netted each lucky fisher a crisp ten dollar bill.

Little 4 year old Addison Kenley was the first child to catch a fish at the derby, pulling in a 1 lb trout just minutes after the 9:00 start. Casey Valade and Emma Kilik tied for the largest fish among the girls 3 - 7 years old, each fish at 4 lbs, 4 oz and 21.5 inches long. Both fish had hooks/line in their mouths – a derby first! Nyssa Hancock had the biggest trout for the girls aged 8 to 12 years, and Hannah Eberiga, won the prize for the largest fish among girls aged 9 to 16.

The fish must have been partial to females this year because the sizes caught by the boys were markedly smaller. Preston Rhodes pulled in the largest fish for the boys aged 3 to 7 at 1 lb 1oz and 17 inches long. Ryan Bilberry, in the 8 – 12 year old bracket won with a fish weighing 1 lb 15 oz; and Tommy Hancock in the 13 to 16 year group reeled the same size for his win.

Sponsors included: Phantom Canyon Brewing Company who provided lunch again this year; Wendy’s; 7 Eleven; Pure Fishing; Glennard Company Landscape Services and Snow Removal; Steve Nelson of K & J Insurance who manned a fish-cleaning booth and handed out cooking recipes; and Rick Skiles of Wild West Taxidermy who volunteered to mount the largest fish caught in each age group.

The derby was a great success, made so decidedly by all the neighborhood volunteers and sponsors who help turn a morning of fishing into a delightful experience for children young and old.



The 2012 Terry Harris Memorial Children’s Fishing Derby was held this year in honor of long-time resident and SVPORC board member, Terry Harris, who passed away recently.



Pictured from left to right are members of Terry Harris’ family who attended the derby: Ashley Webb (niece), Lottie Harris (mother), Rosy Webb (sister) and Cody Harris (son).



Full-Service Family Restaurant

SERVING BREAKFAST LUNCH DINNER

PIT SMOKED BAR-B-QUE

DAILY SPECIALS SERVED ALL DAY EVERY DAY

FRIDAY NIGHT STEAK NITE SPECIAL 5PM-CLOSE

SATURDAY NIGHT ALL-YOU-CAN-EAT BEEF RIBS 5PM-CLOSE

- Kids Menu at Reduced Prices
- Salad Bar • Burgers
- Pit-Smoked Meats • Beer & Wine
- Carry Out

Open 6 days a week
Hours 6:30am-8pm Mon-Sat
Closed Sundays & Holidays
720 W. Browning Ave.
Woodland Park
719-687-1828







321 W. Henrietta Ave. • Woodland Park, CO 80863
P. O. Box 5979 • Woodland Park, CO 80866

719.687.2246
Dennis@gdpandg.com

Locally owned and operated • Serving all of Teller County • Free Delivery

20% discount for new customers



BENCHMARK MORTGAGE

“Your Lender For Life!”
Lower Your Payments Guaranteed!



Diane Beaumont
LMB100019059
NMLS ID: 247026

If your FHA loan was received before June 2009
No Appraisal!
No Employment Verification!

700 W. Highway 24
(Corner of Highway 24 and Highway 67)
Woodland Park, CO 80863

We donate to the military community with every closed loan!

719.687.2112 

Ark-La-Tex Financial Services, LLC dba Benchmark Mortgage NMLS ID: 2143

IREA’s AUTOMATIC BILL PAY

The FREE, Convenient and Secure way to pay your electric bill.

I was worried about enrolling in IREA’s automatic bill payment program. But like thousands of IREA customers, I discovered that the service is free, secure, and it provides advance notice of the date payments will be automatically transferred from my checking account.

- Start today by filling out the “Automatic Payment Authorization” form on IREA’s website
- Enjoy the peace of mind that comes with knowing you’ve paid your electric bill each month
- Sign up to receive your monthly IREA bill by email by enrolling in e-Billing
- Relax! It couldn’t be easier—and its free!



Safe, simple and free.
Click on IREA’s website to get started today!



Sedalia 303-688-3100
Conifer 303-674-9759
Strasburg 303-622-9231
Woodland Park 719-687-9277

Reliable power at the lowest possible cost.
www.intermountain-rea.com



Kitchen Gadgets, Homebrewing and Wine Making supplies
Located Next to Safeway
719-687-0557
www.kitchenandhomebrewsupply.com



10% off one item
Expires 9/1/12. Coupon must be present at time of purchase.

The Rock Supply Presents

3RD ANNUAL

WOODLAND PARK ROCK, GEM AND JEWELRY SHOW

THURSDAY, FRIDAY, SATURDAY AND SUNDAY

AUGUST 16TH - 19TH, 2012

9AM TO 6PM

FREE ADMISSION

FREE PARKING

LOTS OF FUN AND FOOD!

KIM and BODIE PACKHAM
719-360-9665
RUNNINBOAR@HOTMAIL.COM

WOODLAND PARK SADDLE CLUB
HWY. 24, WEST OF WALMART
WOODLAND PARK, CO

The John Wesley Ranch

by David Martinek
photos by David Martinek

It started as a roadhouse. Or at least that’s what the history seems to tell us based on limited information. The main lodge of the current John Wesley Ranch and Retreat Center, located near Midland just before the entrance to Mueller State Park, was built in 1903 shortly before the Santa Fe railroad began constructing a new depot in Divide to replace the one that burned in the mid-1890s. It was about that time that the Santa Fe also began straightening out the Colorado Midland route over the summit of Ute Pass.

Since 1893, the Midland Terminal had been freighting gold ore down the pass from the Cripple Creek and Victor Gold District, and Midland had become an important water stop along that route. A small community grew in those parts to support the railroad, so it is thought that the roadhouse was built to take advantage of the railroad workers living in or passing by the area.

But, other than the suspected roadhouse or any farming activity, between 1903 and 1956 the existence of the ranch and what it was used for is rather cloudy.

Some educated speculation imagines that the land was first purchased originally under the Homestead Act of 1862 which gave prospective “homesteaders” free federal land west of the Mississippi to improve, develop and farm. The original purchase, was a homestead of about 160 acres. The lodge was built later when the Midland community grew, as a result of both the toll road leading to Cripple Creek and the building of Midland Terminal Railroad. Of course, this is all just an

idea.

What is known is that in 1956 the youth minister of the First United Methodist Church in Colorado Springs, during a trip up Ute Pass, noticed that the parcel and lodge were for sale. He proposed the church buy it and convert it into a youth ranch. The church opted not to, but 4 families went together and purchased the property, then only 120 acres. In 1958, they sold the property to the church for about \$3.00, the cost of filing the deed. The property was renamed the John Wesley Ranch, and a cottage was built for a caretaker.



The main lodge was constructed in 1903 using a pole and log framework. This sign welcomes you to the ranch..

Today, the ranch has become a popular summer retreat for church members and their guests. Through the years, the church has developed the property beyond the basic timber-framed lodge. In the 1990s dorm rooms sleeping 43 people, a bath house, a bunkhouse and a chapel were added, as well as outdoor features, including several primitive campsites, a pavilion west of the lodge, hiking trails, two stocked ponds and some meditation spots. The property is completely surrounded by Mueller State Park on three sides, giving the ranch a wilderness appeal.

The current director of the John Wesley Ranch is Kenny Funk. Kenny has a degree in environmental studies and has managed retreat centers in other areas of Colorado. The ranch annually hosts a small bluegrass festival and melodrama, which is open to the public, as well as other events that support the Divide community.

The John Wesley Ranch is located south of Divide at 21285 State Highway 67. For more information, call Kenny Funk at 719-687-2148.



Chapel – The chapel was built in the 1990s and is used for weddings, receptions and worship.

TIRES • SERVICE • STRAIGHT TALK

BIG TIRES

Get the Guaranteed Best Tire Prices in Teller County!

We Honor All Competitors' Coupons!

Touring/Passenger	Truck/SUV/Crossover	Low Profile/Performance
195/60R15 \$56.95	235/75R15 \$84.95	225/45R17 \$79.95
225/60R16 \$62.95	235/70R16 103.95	205/50R17 82.95
205/70R15 \$63.95	265/70R16 113.95	215/50R17 84.95
205/65R15 \$63.95	265/75R16 115.95	225/50R17 89.95
205/55R16 \$73.95	31x10.5 R15 116.95	225/55R17 \$92.95
235/75R15 \$78.95	265/70R17 125.95	215/40R17 102.95

Know where to go for auto service

ServiceCentral

FREE

4-Tire Rotation or Flat Repair

Offer good through 8/31/12 for most vehicles. Cannot be combined with any other promotional or discount offers.

\$10⁰⁰ OFF

Any Oil Change Service

Offer good through 8/31/12. Cannot be combined with any other promotional or discount offers.

\$20⁰⁰ OFF

Any Alignment Service

Offer good for most vehicles through 8/31/12. Cannot be combined with any other promotional or discount offers.

\$20⁰⁰ OFF

Any Brake Service

Offer good through 8/31/12. Cannot be combined with any other promotional or discount offers.

Buy 3 Get the 4th **FREE**

Any Shocks or Struts

Offer good through 8/31/12. Cannot be combined with any other promotional or discount offers. Installation required.

\$20⁰⁰ OFF

Any Transmission Flush Service

Offer good through 8/31/12. Cannot be combined with any other promotional or discount offers.

WOODLAND PARK

Highway 24 & Chester (Behind Sonic)

687-6682

Open: M-F 7:30AM - 5:30PM
SAT 7:30AM - 4PM



MICHELIN

SUMITOMO TIRE



BFGoodrich

YOKOHAMA



GOODYEAR

COOPERTIRES

THE TEAM YOU TRUST™



Guffey Community Charter School

Early Registration is NOW for New and Returning Students

Any Preschool thru 8th Graders Welcome

Offering:

- 6:1 Student - Teacher Ratio
- Multi-age instruction with customized learning styles
- Project based instruction that is individualized for each student
- Local autonomy in administrating our school
- Learning that is rooted in a sense of place, encouraging students to honor & serve their local community as they learn
- Caring staff and supportive community located in a quaint mountain town with a family atmosphere
- School Bus transportation and homemade healthy lunches served daily

Call 719-689-2093 to visit the school or see a virtual tour at www.guffeyschool.org

Celebrating 13 Years of Excellence in Education

Repair • Custom Design • Appraisals

The Jewelry Box



Award Winning Designer
Unique Shopping Experience
Jewelers • Designers

214 W. Midland Ave. • Woodland Park
(located inside Cowbells)

719.645.2635

www.TheJewelryBoxWP.com
TheJewelryBoxWP@yahoo.com

SILVER SALE!

15-35% OFF

Select Silver Jewelry

Sale Ends: 7-31-12

WATCH BATTERIES!

Buy One Get One Free!

(Limit 4 Batteries)

We Buy Gold!

Receive a \$20 in-store credit for every \$200 in gold you sell us!

(Limit \$100 in-store credit)
Expires 8-31-12

Quilters Above the Clouds

by Janet Waldron



Quilts in the Aspens, the sixth annual quilt show presented by the Quilters Above the Clouds quilt guild, will be held Saturday, August 11, 2012 at the Woodland Park Middle School from 9 a.m. until 5 p.m. This represents a new and larger venue for the show, which will feature quilts of all sizes and styles, as well as other quilted items on display. Admission is \$2 per person; children under age 12 are admitted at no charge.

Visitors can expect to see winners from last year's show, vintage quilts, and quilting demonstrations. Also on display will be quilts produced by guild members for various "challenges" held during the past year, including red and white challenge quilts, one-block wonder quilts, and round robin quilts. Visitors to the show are invited to cast their ballots for the winner of the "Viewers' Choice" award, and guild members will vote for the "Guild Members' Choice" award. Ribbons will be presented to the winners of these awards.

Guild members may enter a maximum

of 5 items each, at an entry fee of \$2 per quilt. Those who are not guild members are limited to two entries each at a cost of \$5 per entry.

Woodland Park Middle School is located at 600 East Kelly Road in Woodland Park. For additional information, contact Betty at 719-687-0104, or e-mail getkings0104@msn.com.

Quilters Above the Clouds is a non-profit organization which welcomes quilters of all levels. The guild meets on the last Friday of each month, with additional times scheduled for workshops and other activities throughout the year. The guild has taken as its primary mission the provision of a quilt for each child in Teller County who is taken into protective custody; in addition, quilts and other quilted items are donated to TESSA, Choices, Habitat for Humanity, and other charitable organizations. For further information about the guild, contact Nell Carnein at 687-2739, Pat Harris at 687-0453, or Barb Oliver at 748-3130.

Paradise Spirits Liquors

Safeway Center • Woodland Park
719-687-4256

Beer Buffet

Mix-A-SixPack
150 Different Beers!

Wine Discount

5 Bottles 5% Off, 6 Bottles 6% Off,
etc. Up to 12 Bottles 12% Off!

20 Packs \$14.97

	Bud & Bud Light (cans/bottles)	
	Miller Lite (bottles)	
	MGD (bottles)	
	Coors & Coors Light (bottles)	

Mountain Aspen Granite

CUSTOM MADE CABINETS

Family Owned & Operated

SLAB GRANITE COUNTERTOPS - KITCHEN & BATH

MOUNTAINASPENGRANITE.COM
213 ASPEN GARDEN WAY #4
WOODLAND PARK
(719) 641-0214

Think INSIDE

The Box!

Coming Soon!
Look for our newspaper boxes in Teller and Park Counties!

The Ute Country News is delivered to every mailbox and Post Office box in Divide, Florissant, Lake George and Guffey every month. That's nearly 5,700 residents of Teller and Park Counties! You can also find us at over 20 distribution points from Woodland Park to Guffey. Call 719-686-7393 to reserve your advertising space.

Need Home Improvement?

Windows • Lumber • Roofing • Insulation • Windows
Farm & Ranch • Housewares • Fencing • Plumbing
Electrical • Lawn & Garden • Hardware • Paint & Stain • Doors

25% OFF

Your next purchase!

Present this coupon on a purchase made by Oct. 31st, 2012. 25% discount cannot exceed \$250 value. 25% off promotion cannot be used in conjunction with other discounts, promotions or sale prices. 25% off promotion applies to in store merchandise only, and may not be used on lumber, doors, windows or other commodities items. Limit one coupon and one purchase. Expires 10/31/12.

FOXWORTH GALBRAITH LUMBER COMPANY

300 S. Chestnut, Woodland Park • (719) 687-9205



Established in 1942

Woodland Park’s Oldest Restaurant and Bar

Serving Breakfast Friday thru Sunday
Lunch and Dinner 7 Days a Week

Great Family Dining

Clean, Rustic Atmosphere

Teller County’s Original Steak Place

Separate Restaurant and Antique Bar

Free Easy Parking Behind the Building

Bar Side Entertainment:

Saturday: Free Live Music or Juke Box

Sunday: Bingo*

Monday: The Wheel and Deal or No Deal*

Tuesday: Open Juke Box

Wednesday: Open Mic Night

Thursday: Trivia Contest*

Friday: Free Live Music

*Win Ute Wampum to spend on food & drink

687-1465 WWW.UTEINN.COM

204 W. Midland Ave. (Hwy 24), Woodland Park, CO 80863

Update on the new Florissant Fossil Beds Visitor Center

by Steven Wade Veatch



View of new visitor center being constructed. Photo by Steven Veatch

The fossils from Florissant have been known and studied for more than 130 years. Scientists have described at least 1,700 species of Eocene fossil plants, insects, and spiders from the Florissant fossil beds. These valuable resources provide a deeper understanding of paleoecology, climate change, and other scientific fields of study. The fossils range widely in size—from microscopic pollen and tiny impressions in paper-thin lake shale to some of the largest petrified tree stumps known.

T. L. Mead, a 19-year-old college student, made the first fossil collection from Florissant in 1871. Then, in 1877, a student-organized expedition from Princeton University acquired a large collection from Florissant in just two days. A number of eminent scientists followed and likewise made important collections. It is clear that students figured prominently in the early days of the fossil beds. They still do today through the Junior Ranger program, student internships, and a number of other innovative and cutting-edge youth programs.

Following years of exploitation as a tourist attraction, a large portion of the fossil beds was set aside as Florissant Fossil Beds National Monument in 1969 to protect and preserve these extremely rare and important fossils. The old Pike Petrified Forest gift store and curio collection has served as the monument’s visitor center since its establishment and was costly to maintain. Four decades later, Florissant Fossil Beds National Monu-

ment will complete construction on its first permanent visitor facility sometime in October, 2012. Keith Payne, Superintendent of the monument, points out, “Our park partners and communities have been fighting for years to get it built [visitor center] because they know that Florissant Fossil Beds visitors deserve the best experience they can have—and the fossils deserve the best protection possible.”

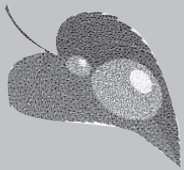
Moreover, the new 4,400-square-foot visitor center is a “green” and sustainably designed building. The new facility will be nearly two-and-a-half times the size of the present visitor center, but it will use about two-thirds less energy. This energy-efficient building will include advanced photovoltaic and solar hot water systems—supplying most of the facility’s electrical and heating needs. The new structure will be among the best examples of a green and sustainable visitor center in the National Park Service.

Our park partners and communities have been fighting for years to get it built because they know that Florissant Fossil Beds visitors deserve the best experience they can have—and the fossils deserve the best protection possible.

— Keith Payne,
Superintendent of the monument

At the same time, the new facility will provide much improved protection for the monument’s collection of delicate fossils, and, as a bonus, visitors will see more of these remarkable fossils on display. After viewing an interpretive video, visitors will be able to enjoy new interactive exhibits during a quality experience in the new visitor center.

To learn more about the visitor center, visit Florissant Fossil Beds National Monument’s website at www.nps.gov/flfo and click the link for “Visitor Center 2013” More details also are available from the monument at (719) 748-3253.



HydroGreen Supply

“Helping the mountain communities grow”

40% Off Sale
on all Humbolt & Cutting Edge Nutrients
(while supplies last)

Soil,
Soiless Mixes,
Rockwool
Complete
Lighting Systems
& Much More!

Several
Nutrient Lines:
Fox Farm, House &
Garden, Advanced,
Botanicare,
Techniflora, General
Hydroponics,
Organic

719-687-2376

213 Aspen Garden Way #5 • Woodland Park
Open Mon-Fri 10am-6pm, Sat 10am-5pm, Closed Sunday

UTE COUNTRY NEWS
Bringing People And Business Together To Expand Growing And Caring Communities

Live in Ute Country part time but want the local news all the time?

Subscriptions Now Available!

Fill out this form and mail it back to us with your payment of \$36 for your 1 year first-class subscription.

Name: _____

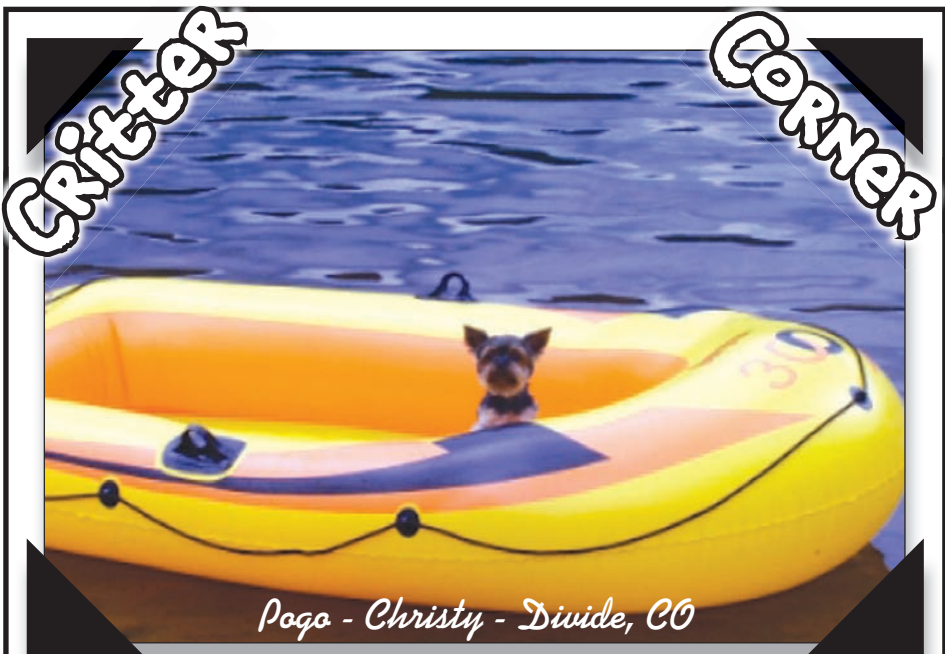
Address: _____

Phone: _____

Email: _____

Mail to: Ute Country News

PO Box 753 • Divide, CO 80814



Have a cute critter? Send us your favorite critter photos and we'll feature them here in the Critter Corner! Indoor or outdoor pets or wild critters are what we're looking for. We will not accept any photos depicting cruelty or harming animals in any way. Email your critters to utecountrynewspaper@gmail.com. Be sure to include the critter's name as well as your name.

Meat processing comes to Lake George

by Maurice Wells
photo by Maurice Wells

Troy Crippen says he thinks he was born with a knife in his hand. From the time he was old enough, Troy worked with his father at C & G Meat Processing in Colorado Springs. Now, he brings 20 plus years of meat cutting experience to Lake George and is opening Crippen's Processing. He is setting up his business in the building opposite the Lake George post office on Highway 24. Troy plans to offer full-service processing of carcasses as well as sausage and jerky preparation. There are no plans for retail sales, just processing for individual customers.

Troy recommends that hunters field dress the animal and have him skin the carcass. He has found this reduces the possible contamination of the meat. Domestic animals may be slaughtered by the owner or taken to a slaughter house from which Troy can arrange to pick up the



Crippen's Processing entrance sign

carcass for processing. Troy felt that the Lake George area was a desirable region to establish his business because there are many popular designated hunting areas nearby and it's close to his home. Business hours will be 24/7 during each hunting season and 9-5 in the off seasons. Please call 748-5450 for specific questions.

Mountain Arts Fest

The Ute Pass Historical Society is hosting our Mountain Arts Food Booth again this year. The Festival will be held Saturday and Sunday, August 4 and 5, from 9 am to 5 pm. The location is next to the Cultural Center in Woodland Park. We will be offering hamburger, cheeseburger, and brat plates, which include chips and a drink, for \$5.00. A hotdog plate is \$4.00. The Mountain Arts Festival features all sorts of arts and crafts booths, live music and great food!

New Lawyer in Woodland Park!



Kirk Garner Attorney at Law

General Civil Practice

- Contract Disputes
- Adjoining Landowners
- Personal Injury

Family Law

- Dissolution of Marriage
- Child Custody
- Parental Responsibilities

Office located in the Pikes Peak Credit Union 720 W. Midland, Suite 201

719-687-6869

Woodland Park
kirk@kirkgarner.com

Life is a Vacation. Are you living it?

Christy S. Lowe
Broker Associate
Real Living-Select Properties
800 E US Highway 24
Woodland Park, CO 80863
.....
719-660-0207
clowecolorado@gmail.com

**Your Colorado Realtor
of the Pikes Peak Region**

Contact me for the Real Estate service you deserve — whether buying or selling.

We have an awesome variety of property available to meet your needs / wants.

Please let me know if you, your friends and / or Family need my assistance with any Real Estate services. Talk to you soon !

Current Hours:
M & Tu: Closed
W & Th: 5:30pm - 9pm
F & Sa: 12pm - 9pm
Sunday: By Appt Only

(719) 294-7878

Badass Tattoo
Custom Tattoos - Piercings - Dermal Implants

NOW OPEN!

GRAND OPENING SPECIAL: FOR EVERY \$100 GIFT CERTIFICATE PURCHASED YOU'LL RECEIVE AN EXTRA \$20! (NO LIMIT - MUST PURCHASE IN AUGUST)

180 N HWY 67, WOODLAND PARK (Next to Big D Motorsports)

WWW.BADASSTATTS.COM

COUPON

Any 1-Topping deLITE®

Crispy Thin Crust with your favorite topping

\$5 LARGE
for a limited time

Family size \$2 more

JOIN THE
**TAKE 'N' BAKE
REVOLUTION**

**Call for the Keller Williams
Marketing Advantage**
Bringing Home Results!

Margie Keener
719-687-2200
Margie@TheKeenerTeam.com
www.MyKeenerTeam.com

Connie Sims
719-339-6795
ConnieSims@kw.com
www.TheConnieSimsTeam.com

KELLER WILLIAMS
CLIENTS CHOICE REALTY
509 SCOTT AVENUE, STE 101 • WOODLAND PARK, CO



Trust your hometown Realtor



David Martinek
687.1516

Web: DavidMartinekcb.com

18401 E. Hwy 24
Woodland Park
CO 80863



Guffey Community Charter School Graduation - 2012

by Flip Boettcher
photos by Flip Boettcher

There were 75 people plus students crowded into the multi-purpose room May 31st for the 2012 graduation ceremonies at the Guffey Community Charter School. This year there were 5- 8TH Grade graduates, all girls.

Principal Pam Moore began with announcements. Then Mrs. Lynda MacDonald introduced her K-4th Grade students and gave each an award. Mrs. MacDonald is assisted by Steve Guiliani and Sunny Sacks.

Mrs. Phyllis Schimpf introduced all her middle school students and gave each an award. This year Schimpf had 12 middle school students. Schimpf introduced each graduate with a verbal picture, gave each a bag of mementos, and their framed graduation picture with a surprise - humorous baby picture of them secretly given to Schimpf by each graduate's parents.

The Guffey school board members recognized the school staff and gave each a bouquet of flowers. Principal Moore introduced the eighth grade graduates.

Graduates – Morgan Elizabeth Batts, Lara Renee Medlin, Kayla Jean Schimpf, Cassie Marie Shengle, and Tara-Lynn Kennedy Tarasi – all raised money this school year with various projects to go on their eighth grade class trip to New Mexico. They visited Roswell and the Carlsbad Caverns.



This year's class of graduating 8th graders.

Each graduate gave a rose to the most important and significant person in their lives. Principal Moore handed out the diplomas. The school board members congratulated each graduate. Then the girls tossed their caps into the air and school was out for this year. There was a BBQ sponsored by the school board following the ceremony.

School starts again August 22.



There was a cake to commemorate this milestone in the girls' lives.





HANDS OF THE POTTER MINISTRY



You're never alone





FREE
ADMISSION

The Lord works in us to reflect His purpose and beauty. Yet, we often fear completely surrendering to Him. We are afraid He might send us off to Africa, or to the poor. Yet, His plan for us is so exciting. We need to learn how to run to Him with full abandon. And never look back.

The Hands of the Potter ministry presents the plan, power and purpose of Christ, using jars of clay to illustrate His truths. Throughout our presentation, Jeremiah 18:6 comes to life, giving hope and strength to the listener.

Are you looking for a richer life in Christ? The Hands of the Potter ministry can bring you back to the richness of the simple and profound Christian experience.

Sunday, August 19th -10:30AM

LIVING STREAMS CHURCH at Colorado Springs Christian School
Woodland Park Campus-1003 Tamarac Parkway
Questions: 719-598-0185 • www.livingstreamschurch.net • email: pastortrish.com

Woodland Park location for sprint during USA Pro

Challenge Event – One of the World’s Premier Events

One of the largest cycling events in United States history, the 2012 USA Pro Challenge will feature the best of the best in professional cycling, competing on a challenging course for seven days through Colorado.

On Friday, Aug. 24, Woodland Park will be a sprint location for one of the largest cycling events in United States history, the 2012 USA Pro Challenge. The race will feature the best of the best in professional cycling, competing on a challenging course for seven days through Colorado.



We have events planned during the week to build interest and excitement for the race.

– Michael Perini, Cochairman for the local organizing committee.

The 2011 USA Pro Challenge attracted more than 1 million spectators from around the state, the country and the world, in addition to airing in 161 countries and territories internationally, and the Colorado economy was the beneficiary of \$83.5 million in economic impact thanks to a successful first-year event.

“We are thrilled that the race is coming through Woodland Park for the first time, not only because of the national and international exposure the city will receive but also because of the potential boost to our local economy,” said Michael Perini, co-chairman for the local organizing committee. “Businesses could see increases in customer traffic and awareness,” Perini said.

To take advantage of the race coming through here Woodland Park is planning a week long list of activities.

“We have events planned during the week to build interest and excitement for the race,” said Perini. “A bike swap,

watch parties and other events are currently in the works.” For Friday, the local organizing committee is anticipating 2,000 or more people to watch the sprint. Therefore, the committee is creating a full day schedule of family, fun-related events starting at 9:30 a.m. Highlights include: People Power Parade, Jumbotron viewing area, Memorial Lake activities, beer garden, Cycling safety and challenge course, live music and family movie night.

Also, school will be out for the day and there will be a farmers market downtown that morning.

For more information visit: <http://www.prochallenge.com>

Facts about the USA Pro Challenge:

- The USA Pro Challenge will be reaching elevations up to 12,00 ft. (3600 m). That’s more than two miles above sea level.
- The race will pass through more than a dozen Colorado counties.
- The USA Pro Challenge is one of the world’s premier and most challenging professional cycling races on the tour circuit.
- The race covers nearly 700 miles over seven days, which is like riding your bike across the state of Colorado one and a half times.

UPHS History Park Tours

Ute Pass Historical Society invites you to explore our local history! History Park will be open for tours on Saturday, August 11 from 10 am to 1 pm. Come enjoy our docent led tours of period cabins and museum displays.

A guided walking tour of historic downtown Woodland Park will meet at the Museum Center building at 10:30 am. The walking tour lasts about 90 minutes.

Tours are free, but donations are greatly appreciated.

History Park and the Museum Center are located just north of the Woodland Park Public Library at 231 E. Henrietta Ave., Woodland Park, CO. 80863.

For more information, contact UPHS at 719.686.7512.

SOUTH PLATTE FLY SHOP

- Full Service Fly Shop
- Friendly, Knowledgeable Staff
- Half & Full-Day Guide Trips
- Introductory Classes

BRING THIS COUPON IN TO RECEIVE FREE FLIES!!!
(6 FREE FLIES WITH YOUR PURCHASE OF 1 DOZEN OR MORE EQUIVALENT FLIES)
EXP. 8/31/12

405 E. HWY 24 • WOODLAND PARK • 719-686-8990
WWW.SOUTHPLATTEFLYSHOP.COM

It's Our
ANNIVERSARY!
Serving Southern Colorado
for 25 years!



CS Certified Vehicles

Quality used cars, pre-owned campers, used motorcycles, and brand new lightweight towables.

“If it has wheels, we’ll sell it!”



From cars and trucks to SUVs, minivans to motorcycles, we’ve continued to offer a wide selection to fulfill the needs of our Southern Colorado community. If we don’t have it, we’ll find it for you!

In addition to our inventory of new travel trailers, we offer an ever-changing wide selection of used RV’s, to include some of the finest brands around, such as Coleman, Fleetwood, Jayco, Starcraft and much more.



If you’re looking for a quality pre-owned motorcycle, we buy, sell, and trade all types, from used Harleys and other cruisers, to sport bikes and even the occasional ATV!

Need a vehicle tune-up or oil change? Do you have an RV that needs service or winterization? The Car Show service department features an indoor facility with four large bays and lifts where our inventory vehicles and RV’s are carefully prepped and serviced before sale by our factory trained techs.



See our current inventory at
www.thecarshowinc.com
or call us at **719-635-7311**

THE CAR SHOW INC.

Family Owned with a Customer Focus



Visit us at
3015 N. Nevada Ave.
Colorado Springs

Factory Direct Cabinets & Flooring

20845 E Hwy 24, Woodland Park
Family Owned & Operated Since 1995

Full Kitchen & Bath Remodel

Contractors Available

All In Stock Items Have To Go

Vinyl
Granite
Laminate

60% to 80% OFF

Tile
Carpet
Hardwood

(719) 687-8800



Mangia Mangia!

Italian Cuisine

407 E. Grace Ave. Woodland Park
719-687-3400

Great Italian food in a casual setting
Happy Hour Daily - \$3.00 House Beer, Wine & Well Drinks
on the Patio and at the Bar from 4-6pm.
Catering to all size Events!

Family Owned & Operated

RAPIDLUBE

Serving Teller County
for the past 26 Years

Now Offering...

- Break Service
- Tire Rotation
- Battery Replacement



Full Service Oil Change & More

See our website for a complete list of our services and money-saving coupons
www.rapidlubeoil.com

Featuring Chevron, Pennzoil & Valvoline
Most other brands available

Complete
Lubrication
Services for:

- Cars
- Trucks
- Motorhomes
- Gas/Diesel
- Domestic
- Imports

We Accept Most
Competitors Coupons!

Open Mon-Fri 8am-5pm, Sat 9am-4pm
Corner of Hwy 67 & Red Feather,
just one mile north of Hwy 24
687-0670
Most Credit Cards Accepted

Red
Feather



Hwy 67

Hwy 24

Nighthawk Ranch

by Flip Boettcher
photos by Flip Boettcher

The Nighthawk ranch, owned by Tom & Dorothy Evans, is perched atop on Gold Hill, just 2 miles north of Guffey. This is a very special place. The mission statement is “To provide a safe, healing environment for 10 – 17 year olds recovering from cancer with the goal of increasing self-esteem.”

It is a chance to experience the challenge of the wilderness, bonding with horses, and personal responsibility. They learn that they can do anything they set their mind to. This is a great place for them to just be kids!

The camp runs Sunday thru Saturday, accommodating 6 kids at a time. There are 3 camps this summer. The first, all boys ages 10 – 17, was in June. The second, July 15 – 21, was for girls ages 12 – 14, and the last camp will be August 5 – 11, for boys ages 10 – 17. There is a space for two more campers for the last camp in August. The camp is free for the participants who qualify. “The kids don’t pay anything. We cover all the costs for their transportation and all costs at the ranch. It’s totally free,” said Evans.

No electronic devices of any kind are allowed at the camp, including TV, cell phones, i-pads, or laptops. There are also no siblings or parents. Evans hires photographer Kathryn Ory, to capture moments throughout the day. At night, Ory downloads the photos to a secure site for the parents see.

The kids get up early. They keep their bunkhouse clean and do kitchen chores. A large part of the camp is geared around horses – feeding, leading, and riding them. Each camper gets a horse to groom and care for. Justin Dunn, horse trainer and 7th Place winner in June’s “Extreme Mustang Makeover” is on staff, bringing his own trained horses to the camp for the kids. Near the end of the camp there is a trail ride where the kids herd the fifteen head of cattle from one end of the 320 acres to the other on the horses they learned to care for and ride.

“It’s so wonderful to see these kids riding the horses,” said Evans. “These kids have a life threatening disease and lots of problems dealing with that and with the treatments they have undergone, but here they are riding horses!”

A medical emergency could develop rather quickly. That’s why there is a full time nurse on the premises at all times. The ranch has 24 hour telephone contact with the Children’s Hospital in Denver. Evans also notifies Southern Park County Fire Protection District of the dates of the camps to assure an EMT is in the district just in case. The ranch complies with all state and local laws and the kitchen abides by health department standards.

The building is a massive 10,000 sq ft log house on top of the hill with views in all directions. The campers have their own luxurious 6 bed bunkhouse with a large sitting/game area, which can be closed



The main lodge is a massive 10,000 sq ft log house on top of the hill with views in all directions.



The campers learn responsibility by caring for their own horse.



The campers bond with the horses through daily contact.



Justin Dunn, horse trainer, supervises the activities.

off from the rest of the house for privacy. Downstairs is a large game room with a motion swimming pool, an air hockey game, ping pong, as well as a mini-kitchen area for snacks. On the ground level has a music room with lots of different instruments (all donated) and there is a live concert on Tuesday evenings.

Outside there is an archery range, ropes course, man-made stream, waterfall, and pond below. A group log cabin building project is under way, which the campers can stay in overnight upon completion. The kids also camp out overnight on a ridge on the east side of the property.

What a wonderful summer camp for kids surviving cancer - to heal, to gain self-confidence, and just be kids!

For more information on the Nighthawk ranch visit their website: NighthawkRanch-Colorado.org. or call 719-689-5634.

Coalition of Pikes Peak Historic Museums Calendar of Events for August 2012

*Remember: Some fees may be charged at events below, even if not listed
Many of the museums offer walking tours*

Aug. 1 - Wed. — Historic Museums of the Pikes Peak Region Coalition Day - Check out the Manitou Springs Volunteer Fire Department's 1934 Ford antique fire truck. Bing your camera to take your picture next to the truck, and taste some yummy shaved ice. Miramont Castle Museum, Manitou springs Historical Society - 10:00 a.m. - 2:00 p.m.

Aug. 3 - 5 - Fri. - Sun. — Fifth Annual "Return of the Rocky Mountain Chautauqua" - encompassing a host of educational and cultural programs - For detailed information and complete schedule of events, visit the Palmer Lake Historical Society website at www.palmerlakechautauqua.org.

Aug. 4 - Sat. — Tabeguache band of the Utes to present their traditional dance to the public - Florissant Fossil Beds National Monument - Pikes Peak Historical Society - Free to the public, seating is limited - 7:00 p.m. - call 719-748-3253 for more info.

Aug. 4 - Sat. — Bronc Day Festival & the Ute Pass Historical Society's Traveling Book Shop - in Green Mountain Falls, starting with a pancake breakfast at the fire station, a big parade at 10:00 a.m., the remainder of the day includes fun for the whole family - 7:00 a.m. - 3:00 p.m.

Aug. 4 & 5 - Sat. & Sun. — Mountain Arts Festival, Food Kitchen - Ute Pass Historical Society offers brats, hot dogs, and other goodies! Call 719-686-7512 for more info.

Aug. 11 - Sat. — Free tours at Ute Pass Historical Society's History Park from 10:00 a.m. to 1:00 p.m., 90 minute

Historic Walking tour of Woodland Park leaves the Museum Center at 10:30 a.m. - Call 719-686-7512 for more info.

Aug. 12 - Sun. — Annual Founders Day celebration, Bancroft Park, Old Colorado City - 9:00 a.m. - 4:00 p.m.

Aug. 16 - Thr. — Restoration Projects in Douglas County - Jerry Wlodarek and Johnny Mulligan return to describe the restoration of the historic Prairie Canyon Ranch, blacksmith forge and other restoration projects in the County - Palmer Lake Historical Society - Palmer Lake Town Hall - 7:00 p.m., free, refreshments served

Aug. 22 - Wed. — 1st Annual Ice Cream Social - entertainment will be West African Drumming by Tracey and Friends - In the beautiful garden at the Miramont Castle Museum - 12:00 noon - 3:00 p.m.

Aug. 25 - Sat. — Annual Ice Cream Social - Offering our traditional 5 cent ice cream cones, 25 cent lemonade, 50 cent brownies, \$1.00 hot dogs. Also - face painting, barber shop quartet, flute players items for sale - 11:00 a.m. - 2:00 p.m., McAlister House.

All summer — Historic Manitou Walking Tours highlighting the people and places that made downtown Manitou Springs unique! Tours take aprox. 90 minutes, Tickets \$10 per person, Saturdays and Wednesdays (weather permitting) at 5:30 p.m. Call 685-1454 for reservations and more info.

All summer — Tours of the McAlister House Museum - Tuesday thru Saturday, 10:00 a.m. - 4:00 p.m., last tour given at 3:00 p.m.

- Enjoy a M-Lazy-C Ranch BBQ and Awards

ADVANCE SKILLS:

- Additional individual training
- Moving and shooting
- Tactical and Combat Reloads
- Weapon malfunction and clearance drills
- Opportunity to fire specialized team weapons

Participants will receive a detailed event package with event and safety guidelines upon registration.

Participants are asked to bring the following equipment: a handgun, 150 rounds of ammunition for each day, an appropriate holster for the weapon you will be training with, extra magazines and or speed loaders, a light weight jacket or vest, eye and ear protection.

Donation: \$175.00 (1 day only); Basic and Advance Skills 2 days(\$300.00) RSVP at 791.304.5706. Business sponsorships are still available.

Since 1980 the M-Lazy-C Ranch has hosted various organizations with team building, corporate events, rodeos and action shooting programs. Find more at: <http://www.mlazyc.com>.

About TCHDSA: The Teller County Sheriff's Office - Honorary Deputy Sheriff's Association was started in January 2011 and consists of local business people who want to make a difference in the community by supporting those who serve through the Sheriff's Office with augmentation, public education and fund raising responsibilities.

For more information visit: <http://www.tchdsa.org>

Florissant celebrates Heritage Day

What a beautiful day for Florissant Heritage Day! It began with a delicious pancake breakfast at the Florissant Volunteer Fire Department. The training and bay areas were transformed into makeshift dining areas to accommodate hungry supporters. Music by the Florissant Jammers accompanied the smells of sausage & maple syrup in air.

Across Hwy 24 the festivities continued. Artisans & crafters had their wares available. Demonstrations on spinning, leather crafting, and dry canning were held.

Music was available at the outdoor stage featuring acts such as Native American Eddie Three Eagles. Poetry was read inside The Grange.

History came alive inside the School Museum. Docents dressed in period costume posed questions and offered anecdotes to help understand how folks lived back in the day.

Children's activities included magicians, clowns, coloring, and a petting zoo.

20 Years on the Road Productions re-enacted scenes of the old west throughout the day.

Fun was had by all, whether you



Spinning Wheel Demonstration

wanted to participate in horseshoes or enjoy a ride on the buckboard, or simply grab a brat and some ice cream.



Antique Ford



Bay transforms into dining room

Volunteers serving up pancake breakfast



School museum

Portrayal of Adeline Hornbeck



The 2nd Annual SWAT Tactical Demonstration & Public Training Event

The Teller County Sheriff's Office - Honorary Deputy Sheriff's Association (HDSA) has announced the 2nd annual fund-raising event to purchase equipment and fund training classes August 11-12, 2012 at M-Lazy-C Ranch in Lake George, Colorado.

The HDSA is planning this two day event in collaboration with the Teller County Sheriff's Office. "After the great success in 2011 we thought this would be an excellent way to again raise resources," said John Eden, an HDSA member.

Based on feedback from participants last year HDSA organizers expanded the public education and training to a second day. "First day will still be a basic course while the second day will be more advanced skills training," Eden said.

Event organizers plan to raise \$10,000 with the two-day event. Last year \$8,000 was raised.

Due to the nature of extremely violent criminals who carry assault type weapons today it's necessary that ERT's have the skills to protect citizens and enforce laws. The 15 member ERT is tasked with day-to-day situations where creating quick solutions to difficult problems is necessary.

Individuals who register for the event will have the opportunity to participate in the following:

BASIC:

- Take a concealed handgun Certification Class (or a Handgun refresher course)
- Compete in realistic live fire scenarios designed to test your skills
- Test your skills and abilities
- Watch live fire demonstrations
- Meet Tactical team members

Meet Joe Kraudelt: The Black Bear's best friend in Colorado

by Bani Kurth

Joe worked with the Probation Dept. for the State of Colorado for 26 years, retiring in 2002. Since then he has been a volunteer for the State Wildlife Program as a way to aid the black bear and the human populations of our state. The "Bear Aware" Team was implemented by Joe. Ten volunteers are active in Teller County.

The bears did well in the wild until humans arrived. Humans are the problem as bears see life. Educating the humans that have chosen to reside in mountain areas, where bears have lived for centuries, is Joe's job.

The goal of "Bear Aware" volunteers is to keep bears safe in their natural habitat.

The goal of "Bear Aware" volunteers is to keep bears safe in their natural habitat. Joe does on-site visits for landowners to insure that we have made our living areas unattractive to bears. Joe has sat patiently for hours waiting for a bear to return to an area it has visited previously. The senior team members may haze bears with rubber buckshot and pepper spray to remind them to stay away from residences to protect them, and to keep humans safe. If

not effective, the last resort is to trap, tranquilize, and transport the bear to remote areas of the state at least 100 miles distant.

Teller county bears get a yellow ear tag on their first removal for an infraction.



Joe Kraudelt (left) with tranquilized cub that will be united with tranquilized Sou/Mom, relocation 100 miles from Teller County.

done to thwart pesky bears. Who may need to be on mountain- living probation, bears or people?

Did you know that:

- Mountain lions are a greater danger to humans than black bears.
- Humans can cause bear deaths.
- The bear population in Colorado is 16-18,000 in 2012.
- During warm months all critter attractants must be kept inside buildings.
- Wild birds do not need to be fed...or, take all feeders in at night.
- Bears have a keen sense of smell. Keep all food/grills inside and/or clean.
- Black bears are omnivores-eat both plants and animals.
- Bears can climb trees and are great swimmers.
- Black bear populations often rouse during hibernation for food.
- IF you come upon a bear: avoid eye contact, back away slowly, DO NOT RUN.
- Listen to Joe: HELP KEEP BEARS WILD.

~ UTE COUNTRY BUSINESS ~



Gary & Diane Melody
719-302-2343

127 S. Pinon Circle, Florissant, CO 80816
bighornprinting@mesanetworks.net

Bighorn Printing Company

The Insurance Center, LLC


Julie A. Matthews
Owner/Agent

105 Sundial Drive
Woodland Park, CO 80863
juliem@wpinsurancecenter.com
719-687-3094
Fax 687-6160
www.wpinsurancecenter.com





Laura Owens
Independent Broker



Saddle Up Realty

719.748.1212 office
719.210.3950 cell
719.748.3845 fax
866.802.3677 toll free
www.saddleuprealtyco.com
laura@saddleuprealtyco.com


BUCKSTITCH SADDLERY

Handmade Saddles, Tack & Other Gear

Rick & Tonya Favinger
40025 Hwy 24
PO Box 220
Lake George, CO 80827

Cell: (719) 660-4488
Phone: (719) 748-3039
Email: buckstitchsaddlery@hughes.net






DAVID MARINEK
REALTOR® Broker Associate

COLDWELL BANKER

1st CHOICE REALTY

(800) 903-3811 EXT. 1516 TOLL FREE
(719) 687-1516 DIRECT LINE
(719) 687-0488 FAX. (913) 707-7547 CELL
davidmartinek@1stchoicerealtycb.com

18401 E. Hwy 24
Woodland Park, CO 80863
http://www.davidmartinekcb.com

 Each Office is Independently Owned And Operated

COLORADO Since 1987
Canyon SIGNS Inc.

"The Pink Building On The Corner Of So. Eighth St. & W. Cucharas St."

- Computer Generated Full Color Graphics
- MDO, Plexiglass, Redwood & Vinyl Signs
- Vehicle & Fleet Signage, Window Signs
- Banners, Event & Magnetic Signs

Spencer O. Swann, President/Owner
Shop: 719-475-7003, Fax 719-447-1761, Cell: 719-339-1691
801 West Cucharas St., Colorado Springs, CO 80905
www.ColoradoCanyonSigns.com/ Spence@ColoradoCanyonSigns.com

RE/MAX PERFORMANCE, INC.
Experience Taken to New Heights



Scott Davis, SRES
Broker Associate
Cell: 719-213-4118 EFax: 866-742-1732
Email: ScottDavis1@ReMax.net
300 Sunny Glen Court, P.O. Box 5044
Woodland Park, Colorado 80866

www.ScottDavis1.ReMax.com



Darrell's Automotive, Inc.
IMPORT & DOMESTIC REPAIRS

687-3313
SATISFACTION GUARANTEED

570 E. CHESTER AVE.
WOODLAND PARK, CO 80863

A.C. CONCRETE

OFFICE 719-748-3805
18061 TELLER CO. RD. 1
P.O. Box 1
FLORISSANT, COLORADO 80816
ACCONCRETE@USA.NET




JUSTIN CLARE
719-330-6496

Andersen IT Consultants, Inc.

Tova Andersen
719-687-1179
www.AITCinc.net

Po Box 807
Woodland Park, CO 80866



Shipping Plus

Your Full Service Shipping & Business Center

Making it easier to live & work in the mountains

email: lisa@shippingplusco.net
Mon - Fri 9:00 - 5:30 • Sat 9:00 - 1:00
52 County Road 5 719-686-Plus(7587)
Divide, CO 80814 Fax 719-686-9176

Bliss hair & nail studio



Shannon Clare Stylist
719-322-2434
call or text
111 N. Center St., Unit B
Woodland Park, CO 80865

You might live in Colorado if:

- You've played "Evacuation Tag" with most of your friends.
- You constantly scan the horizon for smoke plumes.
- You constantly sniff the air for smoke.
- You can tell the difference between a Rain Cumulus cloud and a Smoke Cumulus cloud.
- You have an evacuation checklist on your refrigerator.
- Tears come to your eyes every time you see a fire fighter.
- You have an uncontrollable urge to hug every fire fighter you see.
- You understand the true value of friends and community.
- Everything precious to me that I can carry is sitting by the front door.
- When evacuated, you remember to take your wedding photos but not your toothbrush.
- You keep your truck hooked up to the horse trailer.
- You're constantly checking the wind direction and for black rain clouds.
- You're wondering why there is only one major highway access from the high country to your destination.
- Every time you hear a helicopter flyover your house you rush outside to see if a bucket is attached and a new fire has started.
- You have a really good excuse for not cleaning the house.
- You know you're good friends when they say "Come stay with us as long as you need".
- You have to check three different Post Offices to get your mail.
- Tears come to your eyes when someone says "Welcome Home".
- You wouldn't live anywhere else.

Printed with permission by PPHS

Bronc Day Festival is Aug. 4th

The 74th Annual BRONC DAY FESTIVAL will be Sat, Aug 4th from 7-3pm in Green Mountain Falls. The Ute Pass Historical Society Traveling Bookstore will be there. The day starts with a pancake breakfast at the fire station. A big parade at 10 a.m. includes fire engines, floats, antique cars, clowns, cowboys, gunfighters, and kids on decorated bicycles. There is fun for the whole family including a rubber duck race and a radio controlled model boat race on the Gazebo Lake. There will be a 26' high air slide, a Disney Bouncer, games and arts/crafts booths. For info visit www.broncdayco.org



Tractors, gems and food

by Maurice Wells

What more could you ask for? The weekend of August 17, 18 & 19 will provide a variety of activities all in Lake George. On Friday, Saturday and Sunday the annual Gem and Rock show will be held in the area adjacent to the post office. Vendors from the local region as well as other states and countries will display their collections.

For those interested in power form the past, the annual Antique Tractor Pull will be held on Saturday and Sunday in the Lake George Park. Old tractors will compete against each other to test their pulling power. Winners will receive trophies and, of course, bragging rights.

The Lake George Library will sponsor the Lake George Extravaganza on Saturday and Sunday at the park. Visitors may purchase food, crafts and used books. Proceeds go to support the library.

**When in doubt,
check it out.....**

**Fires occur in an instant!
To assure it's legal to grill
or spark a 2 cylinder engine
Check out these websites:**

www.co.teller.co.us/
www.parkco.us/

Looking for a way to save?

You need to insure both your auto and your home, so why not save money in the process? Call today for a free, no-obligation look at auto and home discounts from American Family.



Frank W Gundy Agency, Inc.
101 Sundial Drive, Suite B2
Woodland Park, CO 80863
Bus: (719) 687-9292
FGUNDY@AmFam.com

**AMERICAN FAMILY
INSURANCE**

All your protection under one roof®

American Family Mutual Insurance Company and its Subsidiaries
American Standard Insurance Company of Wisconsin

Home Office - Madison, WI 53783

American Family Insurance Company

American Standard Insurance Company of Ohio

Home Office - Columbus, OH 43240

amfam.com

© 2005



001726-4/05

~ UTE COUNTRY BUSINESS ~

A CUT ABOVE THE CLOUDS SALON & SPA
MANICURES*PEDICURES*FACIALS*WAXING*SCULPTURED NAILS*HAIR SERVICES

ANNETTE BRIGHT
LICENSED NAIL TECHNICIAN/OWNER
ANNETTEBRIGHT@SKYBEAM.COM

625 W. MIDLAND AVE. GOLD HILL SQUARE NORTH
WOODLAND PARK, CO 80863

719-687-9532
719-484-9437

CARQUEST
AUTO PARTS

520 W Midland
Woodland Park, CO
T 719.687.6018
F 719.687.8520

10% OFF
Any order under \$100
with coupon • Expires 8/31/12

Thank You Firefighters!

CHANGES
Gayle Ledom Specializing in Haircuts & Color
Hair Salon

(in Gold Hill Sq. North)
635 W. Midland Ave.
Woodland Park, CO 80863

719.686.1717

Home Improvements, LLC

Painting & Staining
Interior and Exterior
Remodeling - General Repairs
Honest - Quality Guaranteed
Over 25 Years Experience

Tim Taylor
719-659-0429

KELLY'S OFFICE CONNECTION
TELLER COUNTIES FULL
SERVICE OFFICE SUPPLY
COLOR COPIES AND PRINTING
FAX SERVICE
CUSTOM INK STAMPS
ART AND DRAFTING
COMPUTER AND PRINTER
SUPPLIES
CAMERA CARDS PHOTO PAPER
OFFICE FURNITURE

GAIL AND TIM TAYLOR
623 W MIDLAND AVE
GOLD HILL NORTH SHOPPING CENTER
WOODLAND PARK 80863
719-687-3702

WWW.KELLYSOFFICECONNECTION.COM
KELLYSOFFICECONNECTION@HOTMAIL.COM

THE SUDSEY PUP SPA & BOUTIQUE
"Because your pet is worth it"

GOLD HILL SQUARE SHOPPING CENTER
719-660-3383

ASK ABOUT OUR TRAINING AND PET SITTING SERVICES

email: thesudseypup@live.com
www.thesudseypup.homestead.com

HITCHIN' POST TRAILER SALES, INC.

Superior Equipment, Service and
Repair for over 20 Years

39285 US HWY 24, Lake George, CO, 800-729-2402
www.hitchinposttrailers.com

Trailer RENTALS
Horse, Utility, 3H Living Quarter

TELLER PARK
Veterinary Service
Elevate your Veterinary Care.

Shannon Lemons DVM
and
Mindy Bowman DVM

1084 Cedar Mtn. Road • Divide, CO 80814
719.687.2201
719.687-0827 fax

Bob & Pat Gilley
& Family

**Travel Port Campground
& Mini Storage**

P.O. Box 544 • 39284 Hwy 24
Lake George, CO 80827
719-748.8191 • h: 719-748.8043

Tracy E Barber IV, AAMS®
Financial Advisor

Edward Jones
MAKING SENSE OF INVESTING

18401 Hwy 24 Suite 212
PO Box 5587
Woodland Park, CO 80866
Bus. 719-687-5962 Fax 877-452-4310
TF. 866-687-5962
tracy.barber@edwardjones.com
www.edwardjones.com

Since 1978

JUDD'S GLASS COMPANY

Complete Glass Service
687-3889
Home • Auto Commercial

401 N. Rampart Range Rd.
Woodland Park, CO 80863

www.juddsglass.com 24 Hr. Emergency - 641-7187

Images
AT THE PLAZA

Celeste Huffman
Owner
(719) 687-9811

300 E. Hwy. 24, Suite A
Woodland Park, Colorado 80863

FINANCIAL FOCUS

Financial Tips for Newly Single Women

Article 8— July 30, 2012

Within a marriage, a man and a woman’s financial circumstances are generally pretty much equal. But if a divorce occurs, the woman’s situation tends to be somewhat more challenging than that of her ex-spouse. That’s why, during this major life transition, you may want to meet with a professional financial advisor to go over your spending needs and your cash flow, so that you know what you absolutely need today — and how you can plan for tomorrow.

But before we get into some possible steps you can take, let’s look at some of the reasons that women may fare worse than men, financially speaking, following a divorce:

- Lower income — The average woman’s family income drops by 37% after divorce, according to the U.S. Census Bureau. In many cases, divorce exacerbates a situation in which women were already trailing men in earnings. In fact,

women still only earn 77¢ for each dollar earned by men, according to the U.S. Bureau of Labor Statistics.

- Smaller retirement accounts — The average balance on women’s defined contribution plans (such as 401(k) plans) is only 60 percent of men’s average balances, according to LIMRA, a financial services research organization.

Whether you recognize yourself in the above numbers or not, consider these suggestions:

- Create an emergency fund. Try to put six months’ to a year’s worth of living expenses in a liquid account. Once you’ve established this emergency fund, you won’t have to dip into long-term investments to pay for unexpected costs, such as an expensive car repair, a new furnace or a large medical bill.
- Contribute as much as you can afford to your retirement accounts. Even if you

will eventually receive some of your ex-spouse’s retirement funds, you need to take full advantage of your own savings opportunities — because it’s pretty hard to save “too much” for retirement. If money is tight, it won’t always be easy, but contribute as much as you can to your 401(k) or similar employer-sponsored retirement plan. At a minimum, put in enough to earn the employer’s match, if one is offered.

- Rebalance your investment portfolio. If you are now investing for yourself, you’ll want to take a close look at your asset mix to make sure it is appropriate for your situation. For example, your risk tolerance may be quite different than that of your ex-spouse’s, so if you now have total control over an investment portfolio, you need to make sure it reflects your needs and preferences. Consequently, you may need to “rebalance” your holdings.

- Above all, get some help. Now is a good time to meet with a financial advisor. If you don’t have much experience in managing your finances, you may even find it helpful to work with a trust company, which can collaborate with your financial provider to manage your assets and provide a variety of other functions, including bill payment and recordkeeping. A trust company’s services can prove especially valuable to you and your family should you ever become incapacitated.

Unfortunately, a divorce may leave you feeling “at sea” in many areas of your life. But by following the above suggestions, you can at least help keep your financial ship in calmer waters.

This article was written by Edward Jones for use by Tracy E. Barber IV, your local Edward Jones Advisor.

County bits

Creating Defensible Space

Creating defensible space around your home gives you the best chance of surviving a wildfire with minimal damage. Remember, firefighters are better able to save homes’ whose landscape is void fuels within 70-75’ of the structure. Follow these tips to maximize your homes survival:

- Clear your roof and gutters in spring and fall, or after storms have left limbs or debris.
- Remove unhealthy vegetation.
- Trim any branches hanging over roofs.
- Prune trees to height of 10’.
- Keep grasses and weeds trimmed to height of 6”.
- Stack wood at least 30’ from the house (uphill is recommended).

- Place Liquid Petroleum Gas tanks at least 30’ from structures.
- Clear debris or dead vegetation from any tanks.
- Remove shrubs, trees, or any ladder fuels.

Divide Slash Site OPEN

FRI-SAT-SUN 9-3PM
Take Hybrook South, past Post Office Bring Slash – max length 6’, max diameter 8”

Won’t Accept:
Stumps, roots, lumber, tires, dirt, household trash, metals, weeds, grasses
For more info or to see about extended hours: 719-748-0033 or cusp@uppersouthplatte.org

CUSP seeks Volunteer Social Media Correspondent

For more info go to:
Coalition for the Upper South Platte
POBox 726
38000 Cherokee Ave
Lake George, CO, 80827
(719) 748-0033
www.uppersouthplatte.org/volopp.html

~OUT AND ABOUT~

Check out these activities going on right here in this area. And, if you know of an activity we should know about, please call one of our reporters.

LAKE GEORGE
8/4 Lake George Charter School dedication 12 noon
8/11 Gymkhana 9AM LG Arena
8/17,18,19 Rock & Gem Show
8/18,19 Antique Tractor Pull LG Arena
8/18,19 Lake George Extravaganza LG Comm. Park
8/25 Gymkhana 9AM LG Arena

PIKES PEAK HISTORICAL SOCIETY’S QUARTERLY SCHEDULE OF 2012 CHAUTAUQUAS
8/4 Tabeguache Utes Dance at Florissant Fossil Beds Nat’l Monument 7:00 PM
All Chautauquas (educational programs) are free to the public and include refreshments. All Chautauquas are held at the Florissant Library unless otherwise noted. Please call Harold, 719-748-3562 for more information.

DIVIDE
8/18 The Spring Valley Property Owners and Recreational Corporation will hold their annual residents meeting at the pavilion by Burgess Lake, beginning at 10:00 am.
8/24 Pro Cycling Challenge will be pedaling through Divide on U.S. 24 in the afternoon.
8/25 The 2nd Annual Divide-wide Garage Sale, sponsored by the Divide Chamber of Commerce will be held at the Summit Elementary School parking lot beginning at 9:00 am.
8/25 The Divide Chamber of Commerce’s Annual Kite Flight will be held at the Hayden Divide Community Park and Hayden Divide Loop Trail from 9:00 am - 1:00 pm. Free kites to elementary school-aged children!

WOODLAND PARK
8/4-5-6 Mountain Arts Festival 9-5, Cultural Center near the library. Arts, crafts, music, and food.

FLORISSANT GRANGE
8/2 Jammers & Pot Luck - 6-9pm
8/9 Meeting 7pm Jammers & Pot Luck - 6-9pm
8/16 Jammers & Pot Luck - 6-9pm
8/18 End of Summer Bash & Dance
8/23 Jammers & Pot Luck - 6-9pm
8/31 Jammers & Pot Luck - 6-9pm

GREATER WOODLAND PARK CHAMBER OF COMMERCE
8/2 Chamber Lunch & Learn – Ute Pass Cultural Center – 11:30-1pm
8/14 Partner Benefits 101 Class – Ute Pass Cultural Center – 10-11:30am
8/15 Business Round Table – Tweeds – 7:30-9am
8/16 Ribbon Cutting – The Pikes Peak Guy Press – Ute Pass Cultural Center - 10-12:45pm
21 Business After Hours – Coldwell Banker Building – 5:30-7pm
For more info call 687-9885

UTE COUNTRY NEWS
Uniting People And Business Together To Expand Growing And Caring Communities
Published By The Ute Country News, LLC

Your Ad Here

Call 719-686-7393 or email UteCountryNewspaper@gmail.com for rate information and advertising deadlines.

Antiques At Lake George Inn

Come in this month and see all the new things that have arrived!

We will be opened during the Tractor pull and the Gem and Mineral events. We always have plenty of parking and will have extra parking during the special events this month.

Open Tue-Sat 10am-5:30pm • Sun 11am-4pm
38283 Hwy 24, Lake George, CO
719-294-7103

WE DO ESTATE SALES

ESTATE SALE
FRI 24TH - SUN 26TH

* Kitchen Items * Space heaters * Italian Grandfather Clock * Home Decor * Antique Furniture * collectibles * Bedroom Furniture * Leather sofa chair ottoman set * Solid oak roll top computer desk * other furniture *Rugs * 54 " projection TV * Books * Art * Linens * Large silk plants *Norman Rockwell collection *Pet beds, carriers, accesories * Kirby vacuum *Book shelves appliances * Air hockey game * exercise equipment * much, much, much more. Half price on Sunday

30893 CR 77 from Hwy 24 west, go toward Terryall - follow signs 719-294-7103

Lake George Charter School dedication

by Maurice Wells
photos by Maurice Wells

After many deadlines met and missed, the Lake George Charter School will be formally dedicated on Saturday, Aug 4 at noon. It will open for students on August 21.

The 21,000 sq ft building is set on 10 acres and has been constructed of state-of-the-art materials and is environmentally friendly.

All appliances throughout the building are energy star compliant. In-floor radiant heat and ceiling fans will maintain classroom temperatures which are computer controlled. The lighting in classrooms and restrooms is motion sensitive.

Photo sensors monitor ambient light levels to prevent room lights from being turned on unnecessarily. Rain water runoff is directed to retention ponds to allow water to return to the soil at a gradual rate.

Every classroom has independent access to the outside and to adjacent rooms. There are 6 classrooms and a separate room each for



School entrance

pre-school and kindergarten. Furniture and facilities are sized for the age of the students. Building security is computer monitored and provides for a complete school lock-down in cases of emergency.

On August 4 at noon the official flag raising, cornerstone laying and dedication will be held. The event is open to the public and lunch will be served at the completion of the ceremony. Flags used in the ceremony will be donated by VFW Post 14111. For additional information call 748-3911.



Dedication plaque

Meet Sunshine Spider!

by Kathy Hansen

The sun was shining straight through the kitchen window. A perfect opportunity to illuminate the water droplets from last night's rain, suspended in an incredibly woven web. I was amazed at the symmetry! It wasn't there yesterday. I went outside to see if I could meet the artist. There was a spider huddled in the corner. I decided not to disturb her. The next day and for most of the next month I came to know and understand "Sunshine Spider".

Sunshine Spider is of the Family Araneidae – Orb weavers. There are over 3,500 species worldwide, 180 are north of Mexico. Many Orb weavers have marking on their abdomen which looks like a face. They often have brightly colored "knee" joints. You can see why we named her Sunshine Spider.

Spiders are often classified by their web spinning behavior. Orb weavers spin the classic web that has spokes as anchor points and concentric circles within. Orb webs are most often horizontal and can range up to 3 ft in diameter!

Females are seen more often than males, perhaps because they are much larger or maybe because males do not spin webs. Males are only found in webs to mate or catch a quick snack. Females have a very large abdomen and very small head. Females stay in or near their web, remaining connected by a trap-line.

• Orb weavers have a short life cycle.

The eggs hatch in early spring; several hundred emerging at once! The female spins her web to feed and attract a mate. Once mating is complete the male dies. The female lays the clutch of eggs, which can survive the freeze of winter due to the chemistry of the egg. The female dies at first frost.

• Orb weavers are docile spiders.

They are not dangerous to humans or



pets. They feed on pest insects, therefore beneficial, especially to the gardener. In fact, a common name for Orb weavers is "Garden Spider". The spider in Charlotte's Web was an Orb weaver. They are sometimes called "Barn Spider", but that moniker is shared with another family.

• Orb weavers are nocturnal.

They only stir in daylight if a meal worthy morsel happens into their web. Sometimes they eat their own web. Rebuilding and repair is a nighttime activity. This explains why I saw a fresh web each morning.

It's been 3 years since I last saw Sunshine Spider. What a welcome site it would be to see her offspring this August through to the first frost!

THINKING WINDOWS? THINK THE WINDOW STORE



The Window Store

When Quality and Price Matter

719-388-9900

TheWindowStoreColorado.com

VISIT OUR SHOWROOM • Mon-Fri 9am-5pm, Sat 11am-4pm
5779 N Academy Blvd, Colorado Springs
Behind Lens Crafters • Corner of Vickers and Academy

CALL FOR APPOINTMENT

OTHER SERVICES OFFERED: STUCCO & SIDING, PAINTING,
DECKS, GUTTERS, SUNROOMS, AND SKYLIGHTS

SCAN TO
GO TO
WEBSITE



40% Energy Savings, Guaranteed!
OR THE WINDOWS ARE FREE!

18 MANUFACTURERS
TO CHOOSE FROM,
INCLUDING:


 SIMONTON
WINDOWS®



 Lansing
WINDOWS AND DOORS
Andersen® 


SERVING ALL OF COLORADO FOR 21 YEARS

Call today for your FREE in-home design consultation!



Exceptional Care for Teller County Patients

Pikes Peak Regional Hospital offers the latest in innovative technology with highly trained and committed individuals. We're a small community that's big on caring.



Richard Malyszek, M.D., F.A.C.S.
Board Certified,
American Board of Surgery

- Interventional Radiology.
- Hospitalist Program.
- Family Medical Clinic.
- Orthopedic Surgery.
- Endoscopy/Colonoscopy.
- Walk-in Laboratory.
- Outpatient Rehabilitation.
- Pulmonary Function Testing.
- Minimally Invasive Surgery.
- Skilled Nursing Beds.

Call 719-687-9999 today for more information
or visit pikespeakregionalhospital.com.

Life's tough trails

Working together. Winning combination



Our approach to public relations/marketing is based on nearly 30 years of experience. The recession coupled with the rise of online resources and the emergence of digital networks has led to dramatic changes in making connections. *perini & associates* is a new break of consultancy that understands how to achieve your goals in this new and exciting world. We walk the talk and are comfortable with what lies ahead. Let us guide you!

Our key to success: We start with a clean sheet of paper and build a communication strategy that fits the client. No "cookie cutter" method here. Unique to the client efforts based on nearly 3 decades of positive results. May we add you to our growing list of community clients?

perini & associates. A Woodland Park company with a local focus but with global impact.

Marketing
Public Relations
Access Services
Business Development
Reputation Management

*Impacted by the Waldo Canyon Fire?
Call us for Reduced Rates*



www.periniassociates.com/719.651.5943/Woodland Park, CO

Looking for Protection and Peace of Mind? I've Got You Covered.

Exceptional Service!



**FARMERS
INSURANCE
GROUP**
Symbol of Superior Service

**Proudly Serving
Teller and Park Counties**

Let us be the difference!
Call today for a **FREE**
insurance analysis.

Kristyn Cline Agency

"Your Agent For Life"

719-686-6400
719-686-6401 fax
kcline@farmersagent.com
202 N. West St. • Woodland Park
(one block North of Starbucks)



Auto • Home • Life • Commercial • Worker's Comp